

Specifications

INPUT Response Signals

INPUT 1: Composite video signal NTSC, PAL, SECAM, 4.43 NTSC

INPUT 2: Y/C Separate video signal NTSC, PAL, SECAM, 4.43 NTSC

INPUT 3, 4

Video signals supported

Vertical Frequency Fv (Hz)	Horizontal Frequency Fh (kHz)	Signal Format	Remark
50	15.625	Component RGB	
	31.25	Component RGB	
60	15.734	Component RGB	480i(SDTV)
	31.5	Component RGB	480p(SDTV)
	33.75	Component RGB	1080i(HDTV) HDTV signal
	45.0	Component RGB	720p(HDTV)
	67.5	Component RGB	1080p(HDTV)

PC signals supported

Resolution (Dot x Line)	Vertical Frequency	Horizontal Frequency	Remark
640 x 400	56.4Hz	24.8kHz	NEC PC-9800
	70.1Hz	31.5kHz	NEC PC-9800
640 x 480	60Hz	31.5kHz	(852 x 480) (864 x 480)
	66.7Hz	35.0kHz	Apple Macintosh 13"
	72Hz	37.9kHz	
	75Hz	37.5kHz	
	85Hz	43.3kHz	
800 x 600	56Hz	35.2kHz	
	60Hz	37.9kHz	(1072 x 600)
	72Hz	48.1kHz	
	75Hz	46.9kHz	
	85Hz	53.7kHz	
832 x 624	74.6Hz	49.7kHz	Apple Macintosh 16"
1024 x 768	43Hz Interlace	35.5kHz	
	60Hz	48.4kHz	(1376 x 768)
	70Hz	56.5kHz	
	75Hz (74.9Hz)	60.0kHz (60.2kHz)	Macintosh 19"
	85Hz	68.7kHz	

Resolution (Dot x Line)	Vertical Frequency	Horizontal Frequency	Remark
1152 x 864	60Hz	53.7kHz	
	72Hz	64.9kHz	
	75Hz	67.5kHz	
1152 x 870	75.1Hz	68.7kHz	Apple Macintosh 21"
1152 x 900	66.0Hz	61.8kHz	
	76.0Hz	71.7kHz	
1280 x 768	56Hz	45.1kHz	
1280 x 960	60Hz	60.0kHz	
1280 x 1024	43Hz Interlace	46.4kHz	
	60Hz	64.0kHz	(1600 x 1024)
	75Hz	80.0kHz	
	85Hz	91.1kHz	
	1600 x 1200	60Hz	75.0kHz
65Hz		81.3kHz	
70Hz		87.5kHz	


External Dimensions

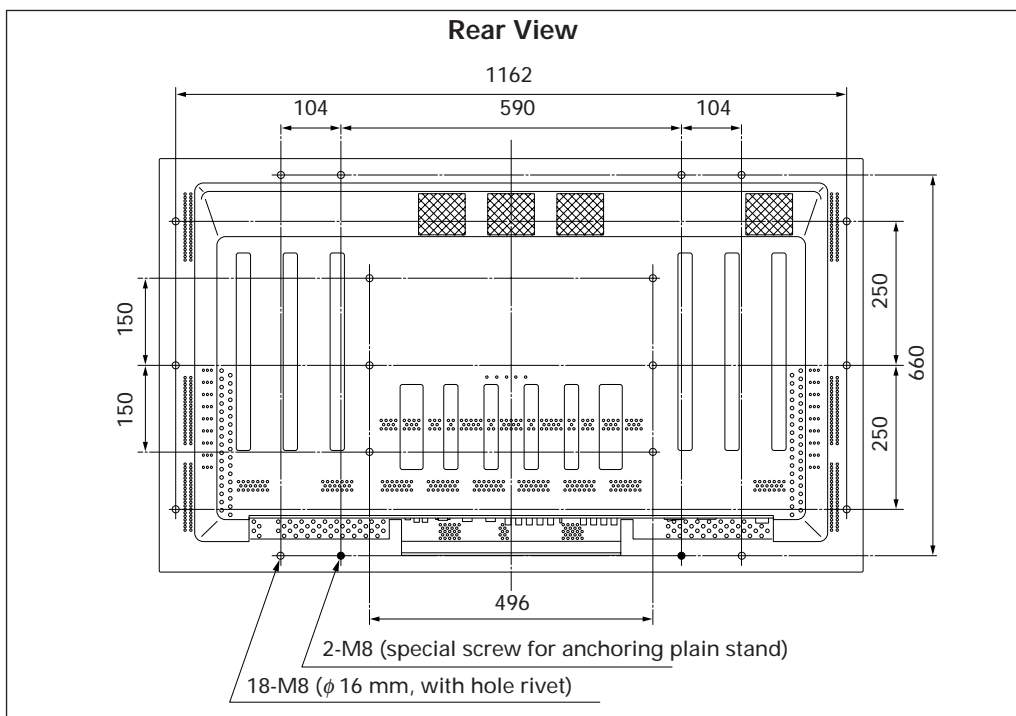
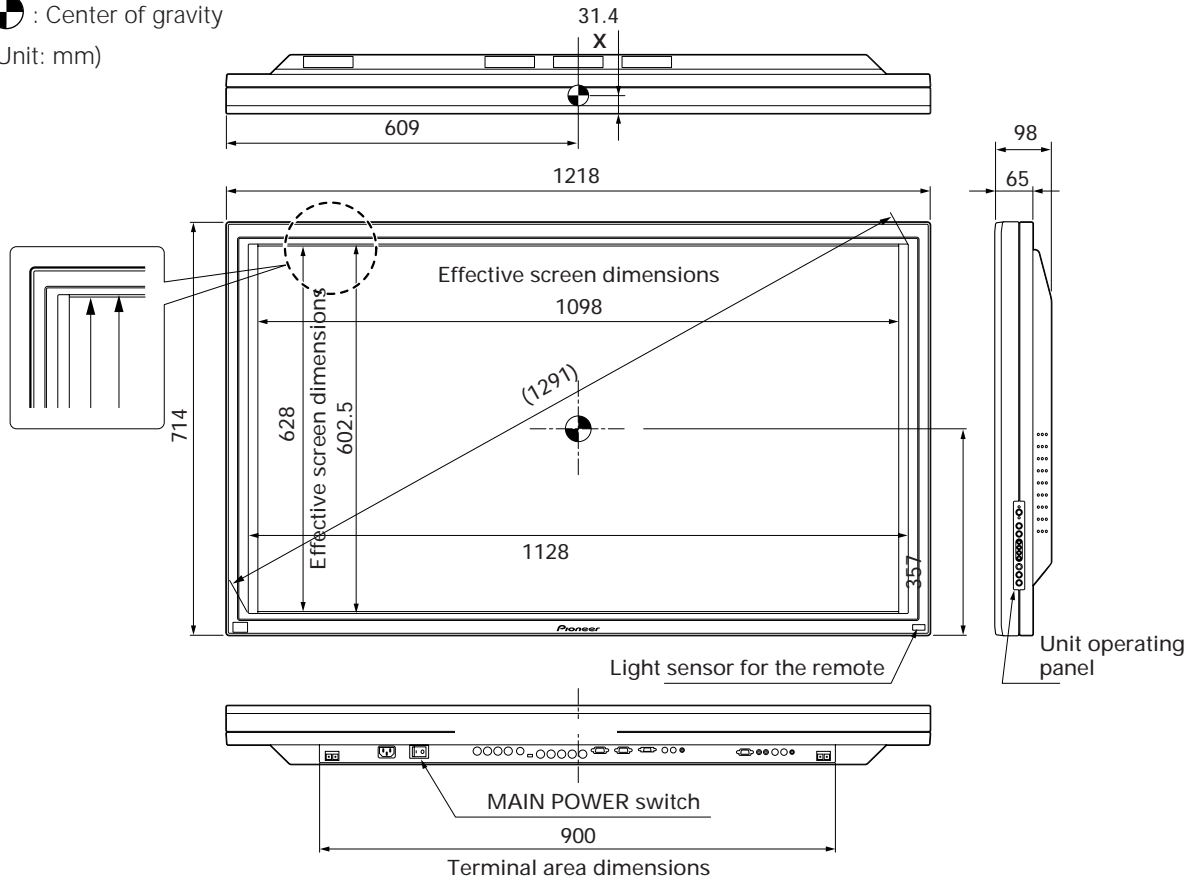
Weight: 39.7 kg (without attachment stand)

Material: Front: Resin; Rear frame: Resin; Rear cover: Aluminum, Front protector panel: acrylic

Treatment: Front: Paint; Rear frame: Paint; Rear cover: Paint (All paints are Pioneer original colors)

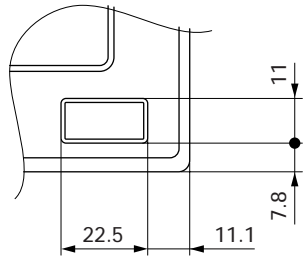
For packaging information, refer to 3.3.2 "Unpacking".

 : Center of gravity
(Unit: mm)

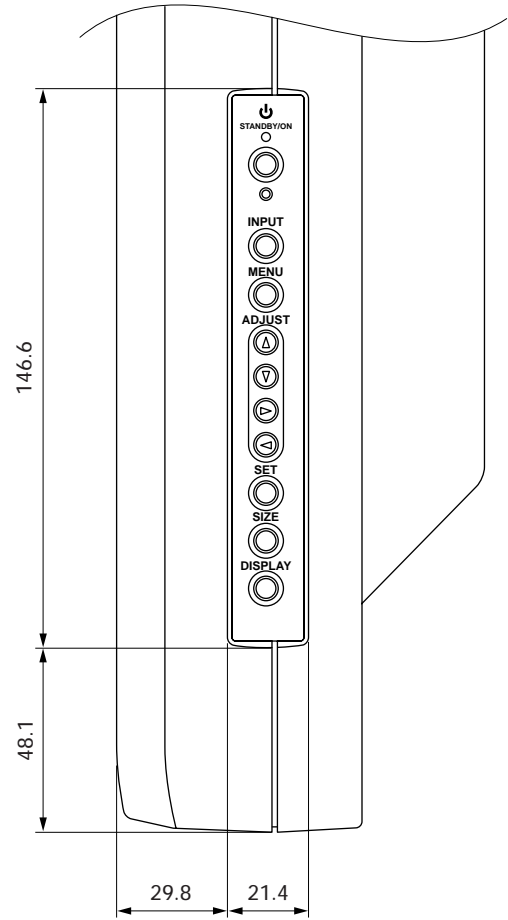


External Dimensions

<Light Sensor for the Remote>



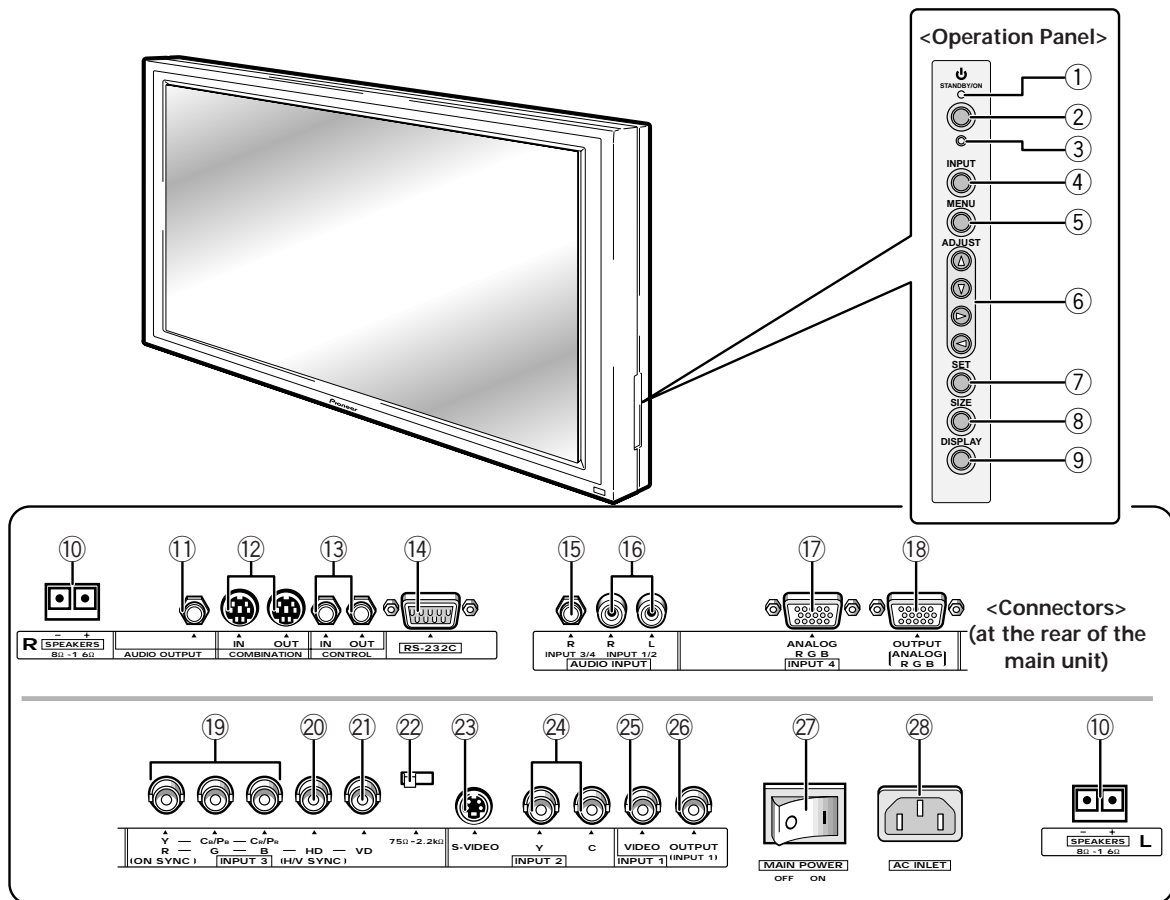
<Main Unit Operation Panel>



Controls and Connectors

NOTE

When the optional plasma display speakers are attached, it is not possible to use the operation panel on the display.



<Main Power Switch Section>

① STANDBY/ON indicator

Red when the display is in standby mode; turns green when the display is operational.

② STANDBY/ON button

Turns main power on or off.

③ KEY LOCK/UNLOCK switch (hidden)

Renders the operation panel and remote operative or inoperative.

④ INPUT button

Used to select inputs.

⑤ MENU button

Used to display the menu screen.

⑥ ADJUST (▲▼▶◀) buttons

Used to move the cursor on the menu screen or to increase/decrease adjustment values.

⑦ SET (select) button

Used to select an adjustment item on the menu screen or to change settings.

⑧ SIZE button

Used to manually change screen size.

⑨ DISPLAY button

Used to view input and settings conditions.

<Terminal Section>

⑩ SPEAKER (R)

Output terminal for a right-hand external speaker. Connected to speakers of 8 to 16 Ω impedance.

⑪ AUDIO OUTPUT (Stereo mini jack)

Used to output the sound from a device connected to the display to a device such as an AV amplifier.

⑫ Combination Input and Output Terminals

Used for simultaneous control of various units.

(Refer to 5.6 "Combination Connection".)


Please use a Mini DIN 6-pin cable (straight, all pins wire bound; this is readily available on the market) as the connector cable.

(NOTE) No ABL linkage function is provided.

These terminals are incompatible with multi-projections such as the RM-V4000V.

When the main power is off, there is no output.

⑬ CONTROL IN/OUT terminals

For connection to Pioneer products that have the  mark. If you connect a CONTROL (If CONTROL connection is carried out) then you can carry out system control of the display.

(NOTE) This product does not support RU-V107 wired remote control units.

⑭ RS 232C terminal

Used to make adjustments from PC. (Conforms to RS-232C.)

(Refer to 5.5 RS-232C Adjustment Mode.)

⑮ AUDIO INPUT (Stereo mini jack)

Audio input for use when the picture input uses INPUT 3 or INPUT 4. Connect to the audio output terminal of the device that is connected to INPUT 3 or INPUT 4 of the display.

⑯ AUDIO INPUT

Audio input for use when the image input uses INPUT 1 or INPUT 2. Connect to the audio output terminal of the device that is connected to INPUT 1 or INPUT 2 of the display.

INPUT 4

⑰ INPUT 4 input terminal

Used to input an analog RGB signal or a component picture signal.

(NOTE) Also supports Green on Sync.

This terminal supports Microsoft Plug & Play (VESA DDC 1/2B).

⑱ INPUT 4 output terminal

Signals fed to the INPUT 4 input terminal (⑰) are output from this terminal. No signal is sent when power is switched off, or in standby status.

(NOTE) When connecting this unit, take a total of five other units as the standard number that can be set to receive input from it. However, when inputting/outputting to/from separate sync or composite sync, the source sync level at the end terminal must be 2.2 kΩ, and over 4.8 Vp-p.

INPUT 3

⑲ G(Y)/B(C_B/P_B)/R(C_R/P_R)

Receives signals from RGB or video hardware.

(NOTE) Also supports Green on Sync.

⑳ HD (H/V SYNC)

Receives signals of HD, and H/V Sync.

㉑ VD

Receives a VD signal.

㉒ Sync Signal Impedance switch

Used to switch impedance for items ㉓ and ㉔.

INPUT 2

㉓ S-VIDEO input terminal

㉔ Y/C Separate Video Input terminal

Receives signals from the Y/C separate video.

(Supports S2 output.)

(NOTE) Don't connect the S-jack and the BNC terminal at the same time. Doing so will result in system malfunctions or breakdown.

INPUT 1

㉕ Video Input terminal

Outputs signals received by the video input terminal.

㉖ Video Output terminal

Video input terminal (㉕) are output from this terminal.

Will not output when the power is off or in standby status.

(NOTE) When connecting this unit, take a total of five other units as the standard number that can be set to receive input from it.

㉗ Main Power switch

Turns the main power on or off.

㉘ AC INLET

Using the power cord accessory, connects to the AC power source.

㉙ SPEAKER (L)

Output terminal for a left-hand external speaker.

Connected to speakers of 8 to 16Ω impedance.

Lists of supported input signals

1) Input Video Signals Supported

INPUT 1

	Signal Format	Screen size					Remark
		4 : 3 NORMAL	FULL	ZOOM	CINEMA WIDE	NATURAL WIDE	
NTSC	Composite	○	○	○	○	○	
PAL	Composite	○	○	○	○	○	
SECAM	Composite	○	○	○	○	○	
4.43 NTSC	Composite	○	○	○	○	○	

INPUT 2

	Signal Format	Screen size					Remark
		4 : 3 NORMAL	FULL	ZOOM	CINEMA WIDE	NATURAL WIDE	
NTSC	S-Video (Y/C)	○	○	○	○	○	
PAL	S-Video (Y/C)	○	○	○	○	○	
SECAM	S-Video (Y/C)	○	○	○	○	○	
4.43 NTSC	S-Video (Y/C)	○	○	○	○	○	

INPUTS 3 and 4

Vertical Frequency Fv (Hz)	Horizontal Frequency Fh (kHz)	Signal Format	Screen size					Remark
			4 : 3 NORMAL	FULL	ZOOM	CINEMA WIDE	NATURAL WIDE	
50	15.625	Component	○	○	○	○	○	
		RGB	○	○	○	○	○	
60	15.734	Component	○	○	○	○	○	480i (SDTV)
		RGB	○	○	○	○	○	
	31.5	Component	○	○	○	○	○	480p (SDTV)
		RGB	○	○	○	○	○	
	33.75	Component	○	○	○	○	○	1080i (HDTV)
		RGB	○	○	○	○	○	
45.0	Component	○	○	○	○	○	720p (HDTV)	
	RGB	○	○	○	○	○		
67.5	Component	○	○	○	○	○	1080p (HDTV)	
	RGB	○	○	○	○	○		

2) Input PC Signals Supported

□ Table of PC Signal Responses

Resolution (Dot x Line)	Vertical Frequency	Horizontal Frequency	Screen Size (Dot x Line)				Remark
			ORIGINAL	4:3NORMAL	FULL	ZOOM	
640 x 400	56.4Hz	24.8kHz			○ 1280 x 768		NEC PC-9800
	70.1Hz	31.5kHz			↑		NEC PC-9800
640 x 480	60Hz	31.5kHz	◎ 640 x 480	○ 1024 x 768	○ 1280 x 768		(852 x 480) (864 x 480)
	66.7Hz	35.0kHz	↑	↑	↑		Apple Macintosh 13"
	72Hz	37.9kHz	↑	↑	↑		
	75Hz	37.5kHz	↑	↑	↑		
800 x 600	85Hz	43.3kHz	↑	↑	↑		
	56Hz	35.2kHz	◎ 800 x 600	○ 1024 x 768	○ 1280 x 768		
	60Hz	37.9kHz	↑	↑	↑		(1072 x 600)
	72Hz	48.1kHz	↑	↑	↑		
832 x 624	74.6Hz	49.7kHz	◎ 832 x 624	○ 1024 x 748	○ 1280 x 748		Apple Macintosh 16"
	75Hz	46.9kHz	↑	↑	↑		
1024 x 768	43Hz Interlace	35.5kHz	△ 1024 x 768		△ 1280 x 768		
	60Hz	48.4kHz	◎ 1024 x 768		◎ 1280 x 768		(1376 x 768)
	70Hz	56.5kHz	↑		↑		
	75Hz (74.9Hz)	60.0kHz (60.2kHz)	↑		↑		
1152 x 864	85Hz	68.7kHz	↑		↑		
	60Hz	53.7kHz		△ 1024 x 768	△ 1280 x 768		
	72Hz	64.9kHz		↑	↑		
1152 x 870	75.1Hz	68.7kHz		△ 1024 x 768	△ 1280 x 768		Apple Macintosh 21"
	75Hz	67.7kHz		↑	↑		
1152 x 900	66.0Hz	61.8kHz		△ 1024 x 768	△ 1280 x 768		
	76.0Hz	71.7kHz		↑	↑		
1280 x 768	56Hz	45.1kHz	◎ 1280 x 768				
1280 x 960	60Hz	60.0kHz		△ 1024 x 768	△ 1280 x 768		
1280 x 1024	43Hz Interlace	46.4kHz			△ 1280 x 768		
	60Hz	64.0kHz		△ 960 x 768	△ 1280 x 768	◎ 1280 x 768	
	75Hz	80.0kHz		△ 960 x 768			(1600 x 1024)
	85Hz	91.1kHz		↑			
1600 x 1200	60Hz	75.0kHz		△ 1024 x 768			
	65Hz	81.3kHz		↑			
	70Hz	87.5kHz		↑			

Shaded boxes correspond to screen sizes that cannot be selected.

Key:

◎ The best video image can be obtained. SCREEN (position, frequency, phase) may have to be adjusted.

○ If screen is enlarged, fine details may become difficult to view.

△ Simple indication.